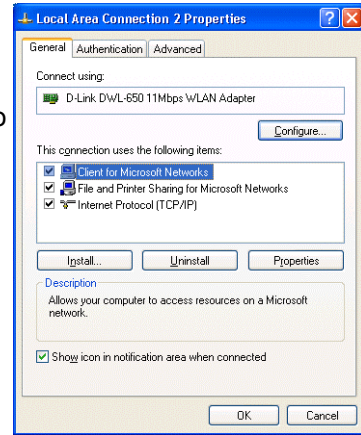


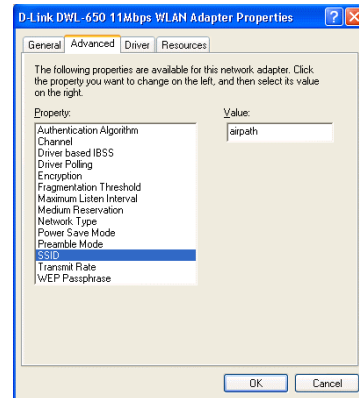
Configuring Windows XP for Wireless Connectivity

1.) Install a wireless card and the necessary drivers as directed by the manufacturer.

2.) Change the SSID setting to the SSID for the venue you are at. For example, if the SSID is 'whotspot' ensure that the SSID is set to 'whotspot'. To do this, click on **Start**. Go to **Control Panel**, then **Network and Internet Connections**, and finally **Network Connections**, and find your wireless card. Right click on the card and go to **Properties**.



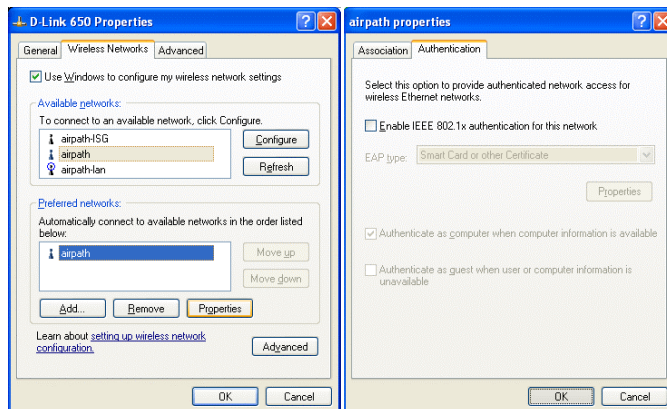
Under the **General** tab click the **Configure** button. Click the **Advanced** tab and find the property for **SSID** in the property list. Highlight the word **SSID**. Change the value to 'whotspot' or whatever the current SSID is at your venue. Click **OK**.



Depending on your version of XP (Home, Pro, or whether you upgraded or ran a full install), you may see either one of the following two scenarios. Simply follow the one that fits your situation.

Scenario 1

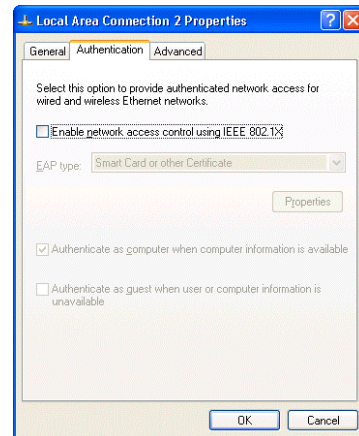
3.) Click on **Start**. Go to **Control Panel**, then **Network and Internet Connections**, then **Network Connections**, and find your wireless card. Right click on the card and go to **Properties**. Click on the **Wireless Networks** tab. In the **Preferred Connections** section, left click on the connection you wish to connect to and go to **Properties**.



The properties page for that connection will open up. Under the **Authentication** tab if the "Enable network access control IEEE 802.1X" is checked, uncheck it and click **OK**.

Scenario 2

3.) Click on **Start**. Go to **Control Panel**, then **Network and Internet Connections**, then **Network Connections**, and find your wireless card. Right click on the card and go to **Properties**. Under the **Authentication** tab if the "Enable network access control IEEE 802.1X" is checked, uncheck it and click **OK**.



4.) It is recommended that you either reboot your computer or disable and re-enable your wireless card at this time. To do this, click on **Start**. Go to **Control Panel**, then **Network and Internet Connections**, then **Network Connections**, and find your wireless card. Right click on the card and click **Disable**. Wait a few seconds, then right click it again. This time select **Enable**.

5.) Open a browser. You may be asked to accept a security certificate - this is normal. Click **Yes** to accept the certificate. You should now see a login screen. Log in using your full username and password that you created during the signup process, or create a new account by clicking on the signup link located on that page.

